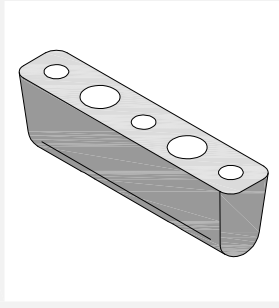


FIXED POINT BLOCK FOR RIDGE AREA

RA 110_...*

NOTES



MATERIALS

Polyamide

SUITABLE FOR

Riverclack 500

Riverclack 550

INCLUDED COMPONENTS

N°2 stainless steel screws:

- (*)"S" installation on steel (max thickness 4 mm):
ø5,5x60 mm self-tapping screw (WÜRTH 012355 60 - PR3)
- (*)"W" installation on wood:
ø6,0x80 mm screw (WÜRTH WÜPOFAST 01826 80 - PZD3)

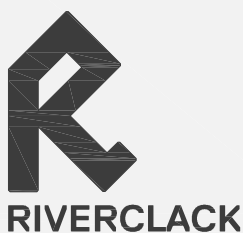
NOTES

- In case of installation on steel: max thickness 4 mm
- For use in ridge area only
- For straight sheet length < 20 m
- For sheets longer than 20 m, high snow loads, permanent loads (i.e. machinery), or tolerances in the structure that are excessively wide, use two RA 110. For these applications, please refer to fixed point guidelines or contact ISCOM
- For applications with two RA 110 it is recommended to install them on purlins placed in the same fixed point area (max 2,00 m apart)
- In case of use with curved sheets contact ISCOM
- When ordering, specify the type of screw needed
- The design by a competent technician is always recommended, pay special attention to loads deriving from extreme weather conditions

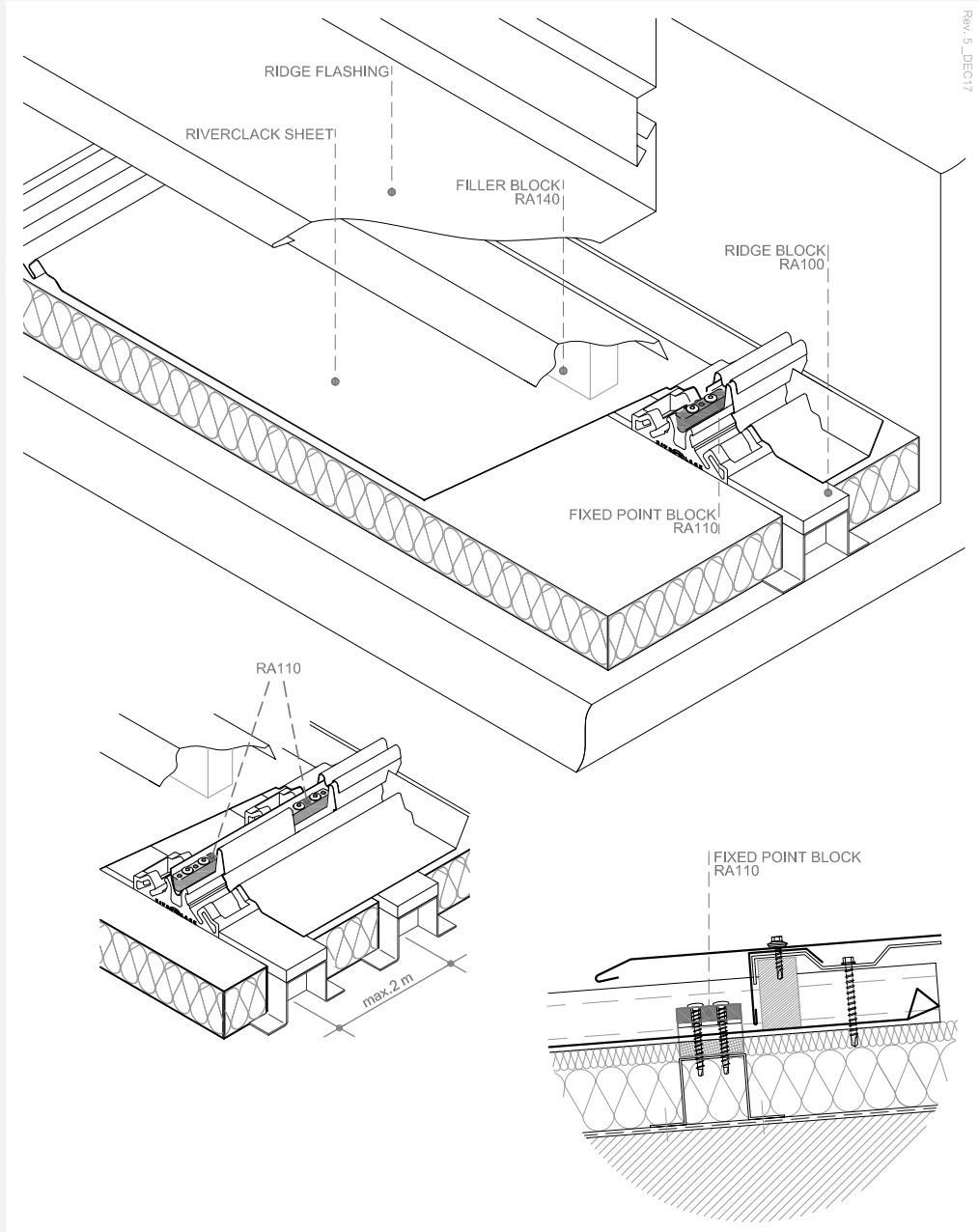
INSTALLATION ADVISES

- For pitches lower than 5%, close the back end of the drainage channel with silicone
- Make a 5 mm core hole before screwing
- Do not put strain on the block when drilling and screwing

WWW.RIVERCLACK.COM

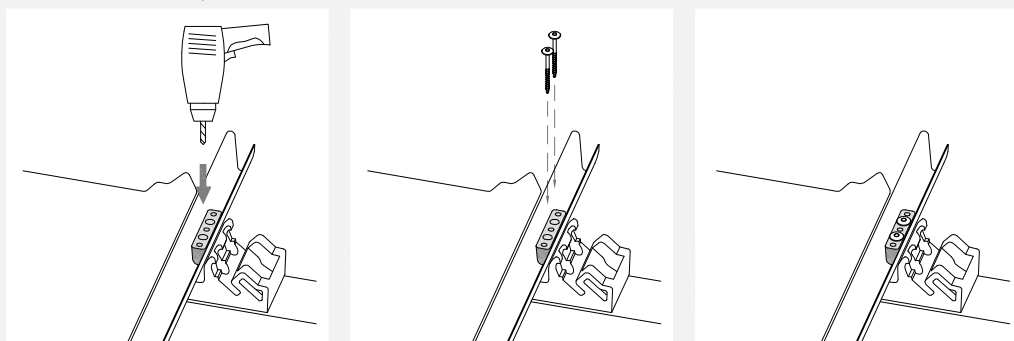


TECHNICAL SITUATION



REV. 5_DECI17

INSTALLATION SEQUENCE



All information issued by ISCOM SPA is subject to continuous development without notification. The information contained in this data-sheet are correct at the date of issue. It is addressee's responsibility to ascertain from ISCOM SPA that the information contained in this data-sheet has not changed at the time of use by the addressee.