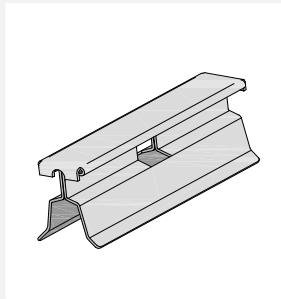


NOTES



MATERIALS

Clamp: Stainless steel AISI 304
 Clamp-closure:
 Mill finish aluminum 1.0 mm
 Pre-painted aluminum 1.0 mm

SUITABLE FOR

Riverclack 500, Riverclack 550

INCLUDED COMPONENTS

- VHB 3M bi-adhesive

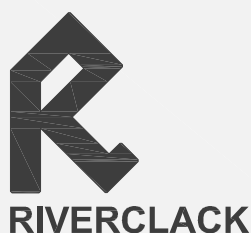
OPTIONAL COMPONENTS

- Snow guard bar
 - Snow guard tongue RA 216
 - Proper solvent

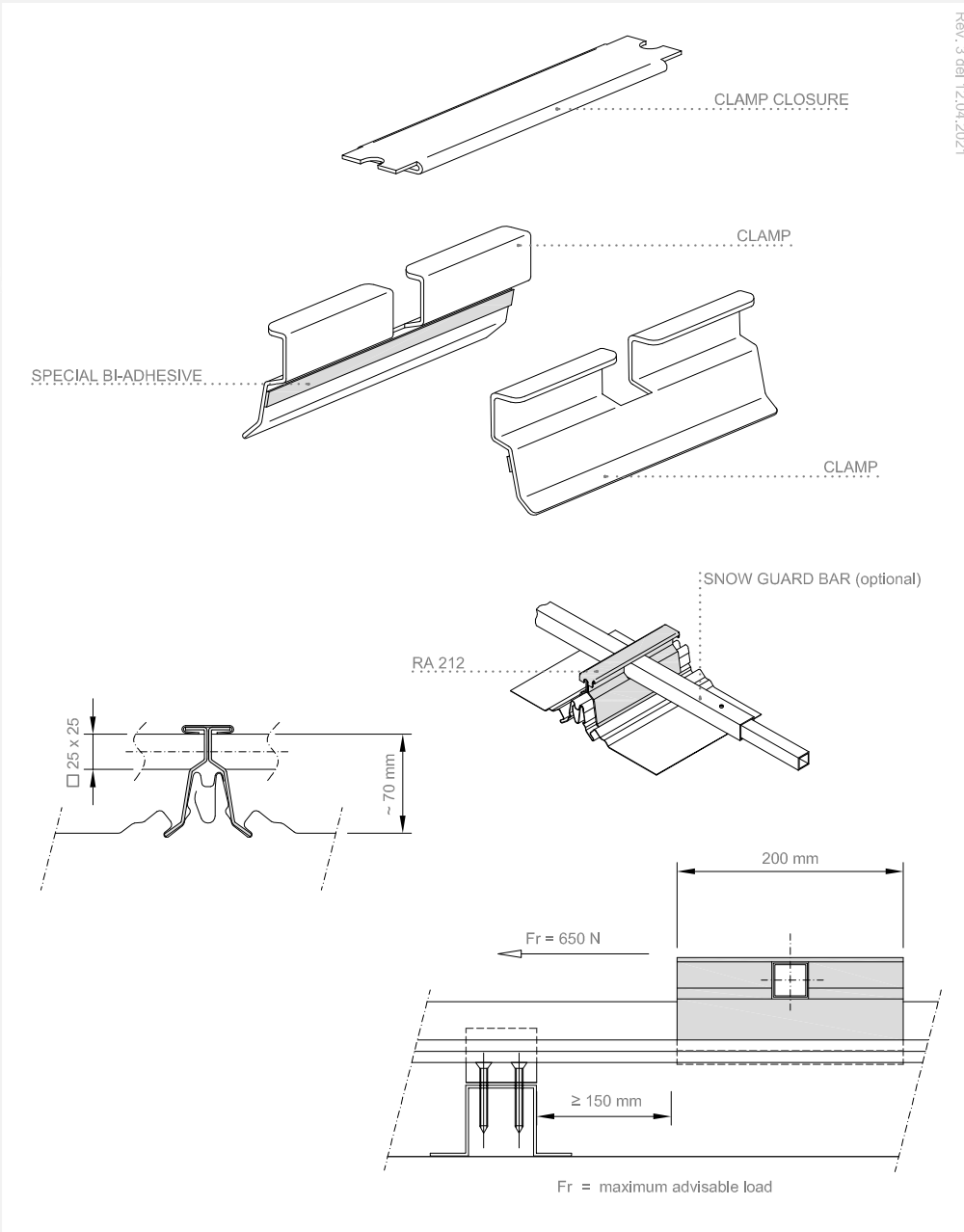
NOTES

- Clean the item mounting zone on the panel from dirt and debris, degrease the panel rib sides with proper solvents (eg. a 50/50 mixture of water and isopropyl alcohol or n-heptane)
- The mounting of the item is not recommended when sheet temperature is less than 10 °C
- The max adhesion strength is reached after about 72 hours after the mounting
- Make sure there is no condensation on the sheets surface before item mounting
- When mounting keep the item at least 150 mm away from any fixing clip
- An immediate mounting of the item is recommended; in case of storage avoid exposure to direct sunlight and weather
- Don't mount on the protrudent end zones of the panel
- The design by a competent technician is always recommended, pay special attention to loads deriving from extreme weather conditions

WWW.RIVERCLACK.COM

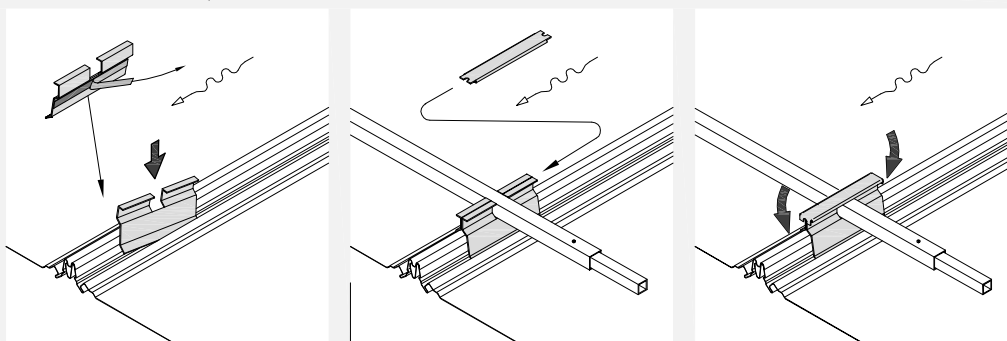


TECHNICAL SITUATION



Rev. 3 del 12.04.2021

INSTALLATION SEQUENCE



All information issued by ISCOM SPA is subject to continuous development without notification. The information contained in this data-sheet are correct at the date of issue. It is addressee's responsibility to ascertain from ISCOM SPA that the information contained in this data-sheet has not changed at the time of use by the addressee.